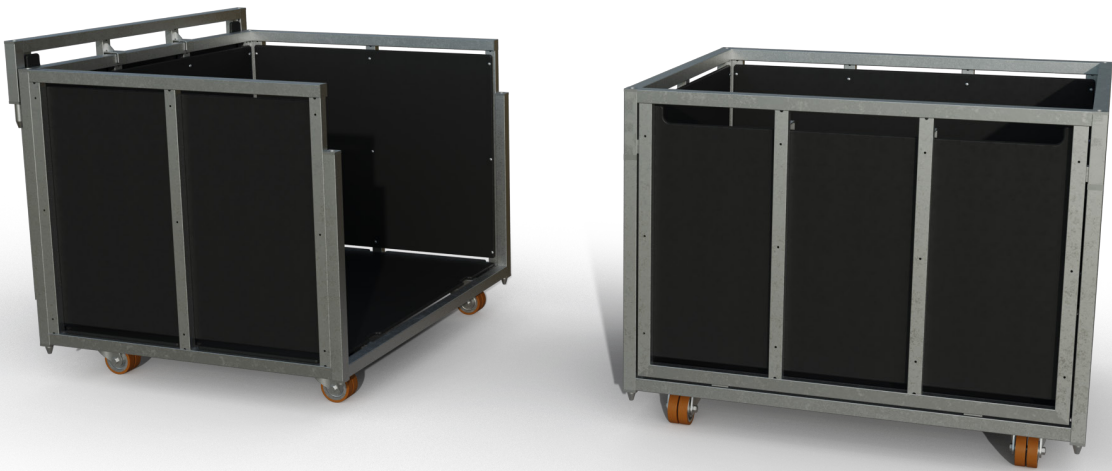


DB Dolly Site Materials



Dutch Barrier's Dolly Site Materials is designed for the storage and transport of rubber mats and cable ramps. With a removable front panel for easy loading and unloading, it shares the same footprint as other Dutch Barrier dollies and can be interstacked for touring. Each dolly holds up to 40 standard cable ramps (91 cm each), ensuring efficient, organised site handling.

- a state of the art aluminium barrier system, built for fast setup and optimised crowd control solutions -

Dutch Barrier's founders and partners saw an opportunity to start afresh with an entirely new stage barrier design, preserving the best and improving the rest.

Why. We believe in quality, safety, and creating an unforgettable experience.

How. By leveraging the original creator's combined experience to reinvent the best barrier system to date from the ground up.

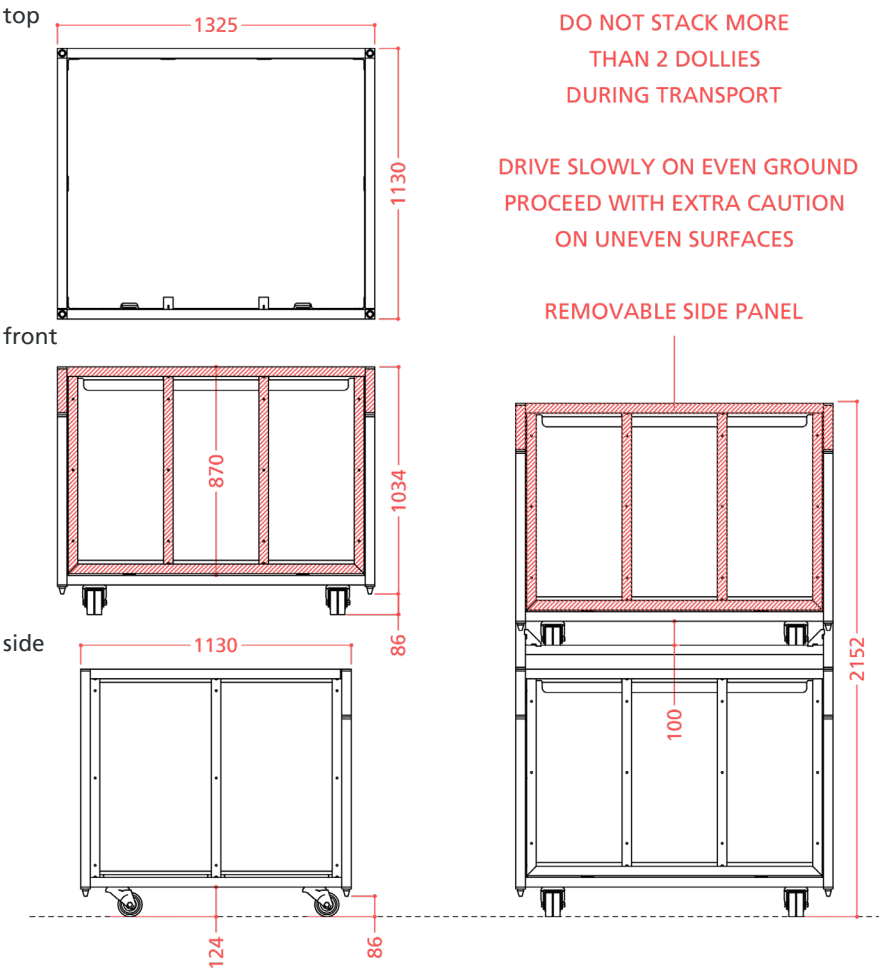
What. Dutch Barrier® is a high-end, lightweight aluminium barrier system offering an innovative combination of straights, special sections, and storage solutions, available to rent or buy.

Oh, and there's one more thing...
We are a state-of-the-art engineering company where customer support is an integral part of the mission instead of an online promise.

More information: info@dutchbarrier.nl
Rental & Sales: info@duchtbarrier.services

Technical Specs

- Identical footprint ensures seamless stacking and full mix-and-match transport compatibility across all Dutch Barrier dollies
- Removable side panel with integrated hooks for easy access and unloading
- Weight 131,4kg



- a safe show for every row -