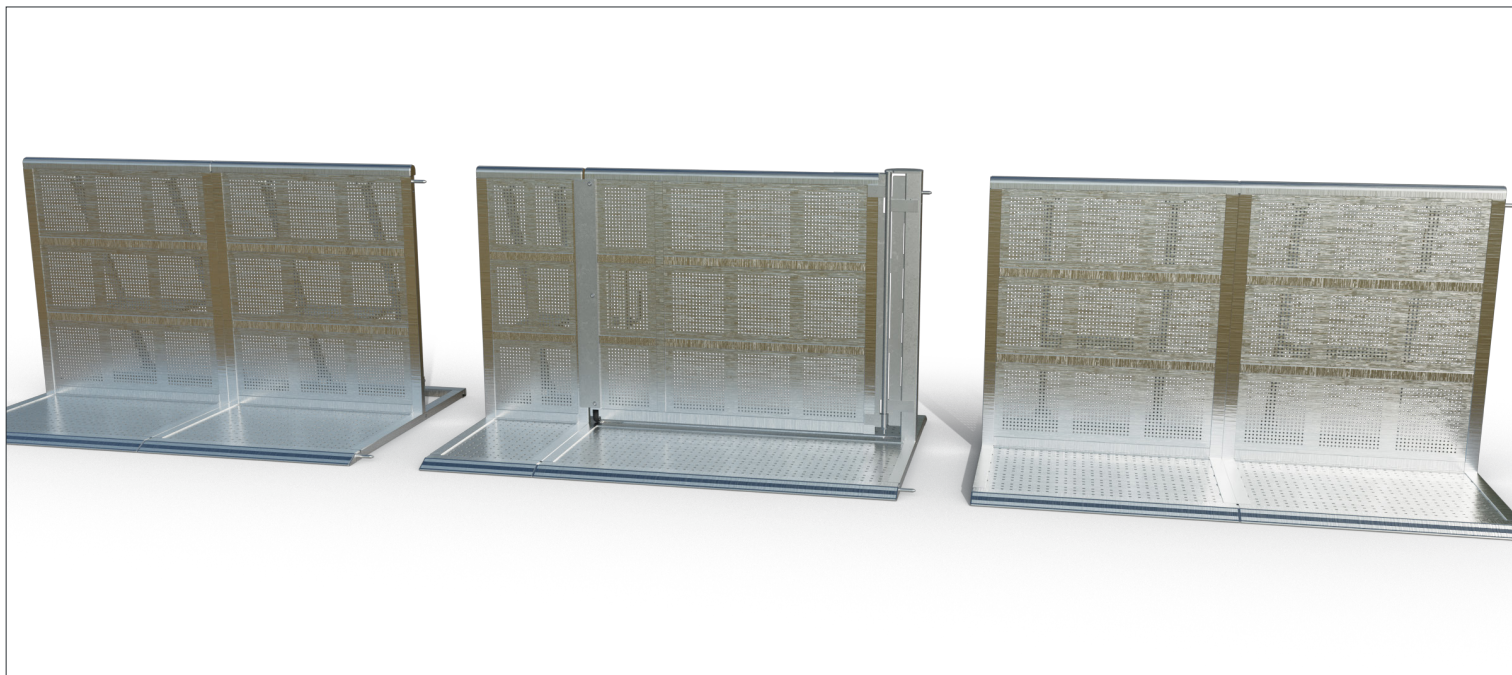


DB Gate 1m50 - Right (set)

Dutch Barrier's Gate 1m50 – Right (set) is the right-opening version of the 1m50 Gate and can be configured for two setups. In the front-of-stage setup, the gate only opens towards the audience, making it suitable for high crowd pressure areas. In the low-pressure setup, it opens in both directions and can function as an efficient blow-out gate.

- a state of the art aluminium barrier system, built for fast setup and optimised crowd control solutions -

About

Dutch Barrier's founders and partners boast over 50 years of experience in high-end manufacturing, layout design, and crowd control solutions. We saw an opportunity to start afresh with an entirely new stage barrier design, preserving the best features and improving upon them where possible.

Why

We believe in quality, safety, and creating an unforgettable experience. The safer an audience is, the more comfortable it will feel at your event.

How

We achieve quality and safety by leveraging 50-plus years of combined original creators' experience to reinvent the to date world's best barrier system from the ground up, making it accessible to anyone who might be in the market for such a system, either to rent or to buy.

What

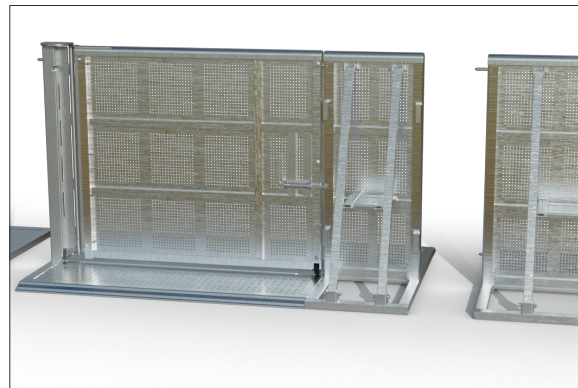
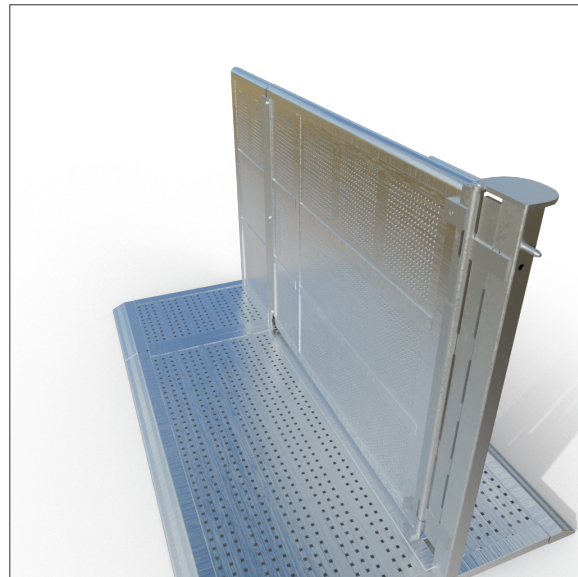
Dutch Barrier® is a state-of-the-art lightweight aluminium barrier system offering an innovative combination of straights, special sections and storage solutions. Create ingenious crowd control solutions, enjoy quick setups and enhanced handling, and benefit from an equal footprint for every dolly during transport or storage.

Oh, and there's one more thing...

Dutch Barrier® is not just a brand. It's a state-of-the-art engineering company where customer support is an integral part of the mission rather than being hidden behind the impersonality of an online promise.

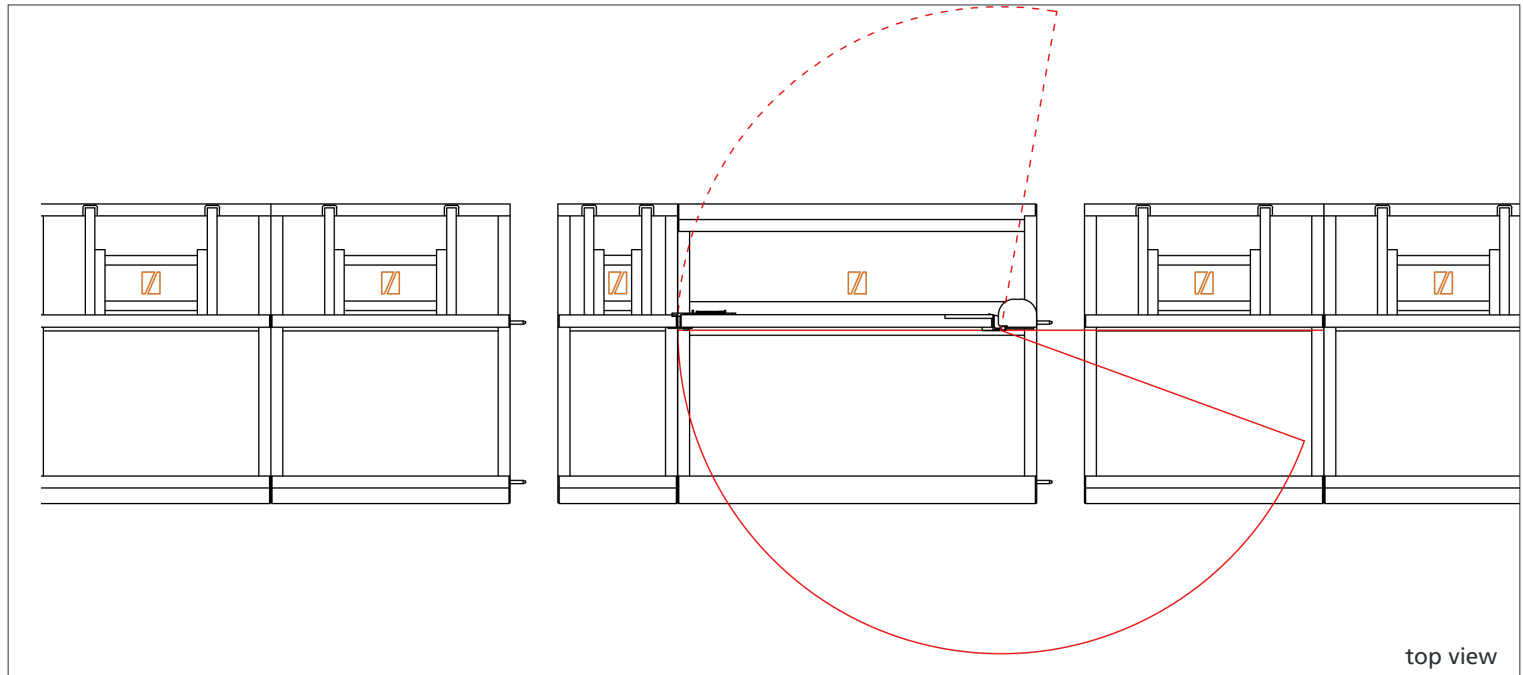
More information: info@dutchbarrier.nl

Rental & Sales: info@duchtbarrier.services



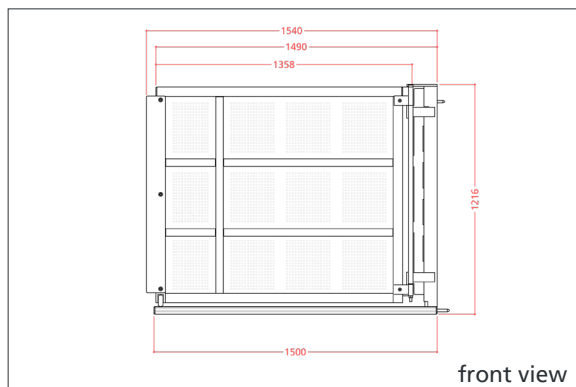
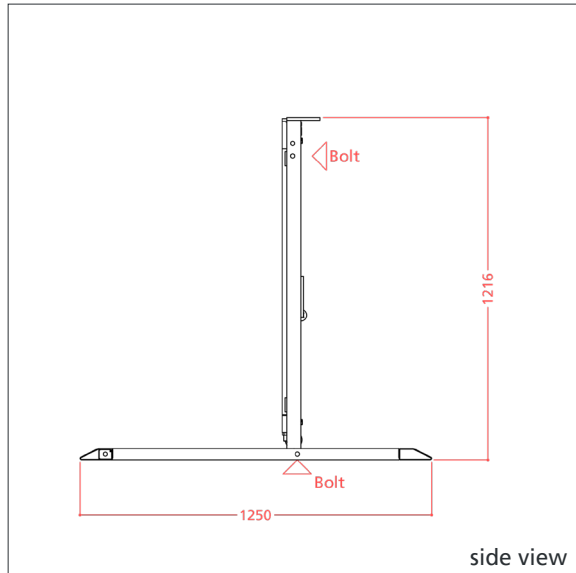
- a safe show for every row -

DB Gate 1m50 - Right (set)



Testing was done at a minimum of 5kN/m pressure at the top rail, in high pressure setup, following and exceeding the Temporary Demountable Structures Edition 4 guidelines by the Institution of Structural Engineers (ISE). TUV reports for each test are available at Dutch Barrier & Dutch Barrier Services upon request.

- a state of the art aluminium barrier system, built for fast setup and optimised crowd control solutions -



Technical Specs

- A full aluminium treadplate, sloped in front and back, with an aluminium upright, galvanised steel hinge, and a DB Straight 0m50 – Hinge Blocks
- DB Straight 0m50 – Hinge Blocks specifications are provided on a separate sheet
- A treadplate measures 1500 mm wide and 1250 mm deep, and the upright measures 1358 mm wide and 1040 mm high, providing an effective opening of 1m33
- One set measures 2000 mm wide, 1250 mm deep, and 1200 mm high
- A rounded top rail and welded end caps for the audience's comfort and safety
- Bottom pin provides for easy setup and alignment
- The upright is suspended to the steel adapter by a steel hinge pin
- The treadplate interconnects at the bottom on either side by one standard Dutch Barrier bolt
- A stainless steel plate on the audience side and an internal latch can ensure frontstage capability if configured correctly
- Also available with black upright
- Weights: Floor 34.0 kg, Upright 32.0 kg, Hinge 13.8 kg
- Stored and travelled per four complete sets in a bespoke stainless steel DB Dolly Gate 1m50/3m00
- Use in high crowd pressure areas: ●●●● 5/5 or ●●●○ 3/5

- a safe show for every row -