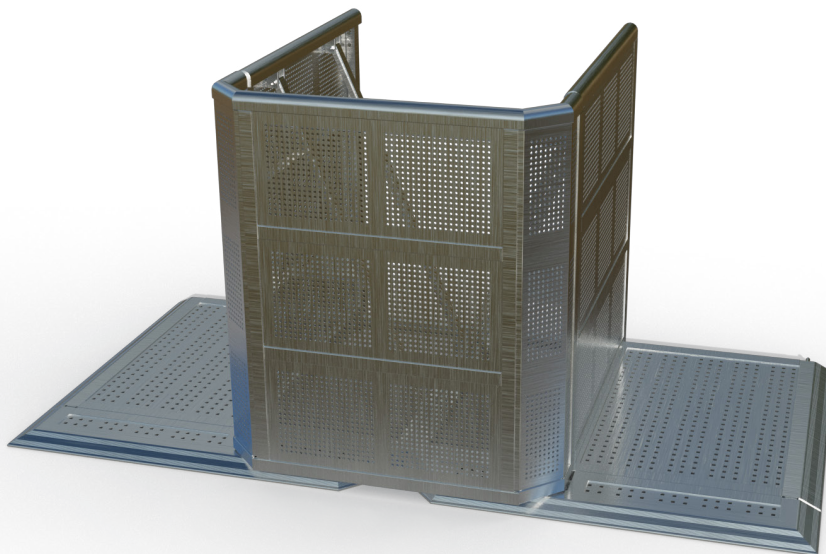


DB Half Bumper - Closed

Dutch Barrier's Half Bumper - Closed section is derived from one of our line-up gate components and serves as a sleek end cap for a barrier thrust line. It is the ideal solution whenever crowds need to be separated in a controlled way. Closed Bumpers seamlessly integrate with side slopes, eliminating trip hazards and ensuring a safe and smooth experience for the audience.

- a state of the art aluminium barrier system, built for fast setup and optimised crowd control solutions -

About

Dutch Barrier's founders and partners boast over 50 years of experience in high-end manufacturing, layout design, and crowd control solutions. We saw an opportunity to start afresh with an entirely new stage barrier design, preserving the best features and improving upon them where possible.

Why

We believe in quality, safety, and creating an unforgettable experience. The safer an audience is, the more comfortable it will feel at your event.

How

We achieve quality and safety by leveraging 50-plus years of combined original creators' experience to reinvent the to date world's best barrier system from the ground up, making it accessible to anyone who might be in the market for such a system, either to rent or to buy.

What

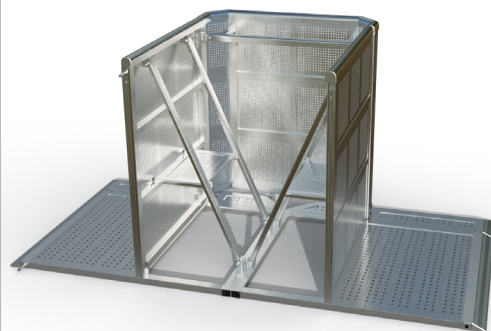
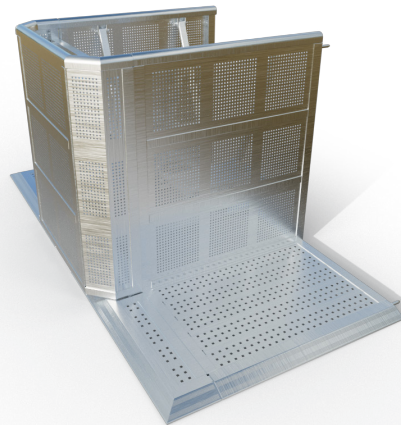
Dutch Barrier® is a state-of-the-art lightweight aluminium barrier system offering an innovative combination of straights, special sections and storage solutions. Create ingenious crowd control solutions, enjoy quick setups and enhanced handling, and benefit from an equal footprint for every dolly during transport or storage.

Oh, and there's one more thing...

Dutch Barrier® is not just a brand. It's a state-of-the-art engineering company where customer support is an integral part of the mission rather than being hidden behind the impersonality of an online promise.

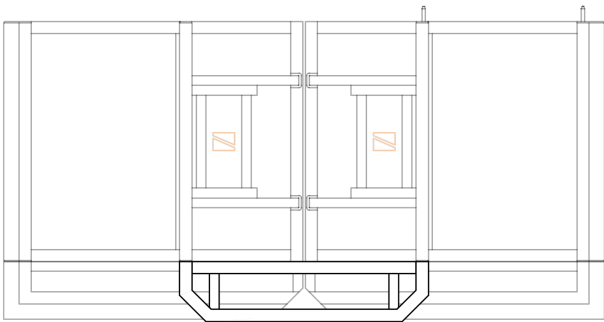
More information: info@dutchbarrier.nl

Rental & Sales: info@duchtbarrier.services



- a safe show for every row -

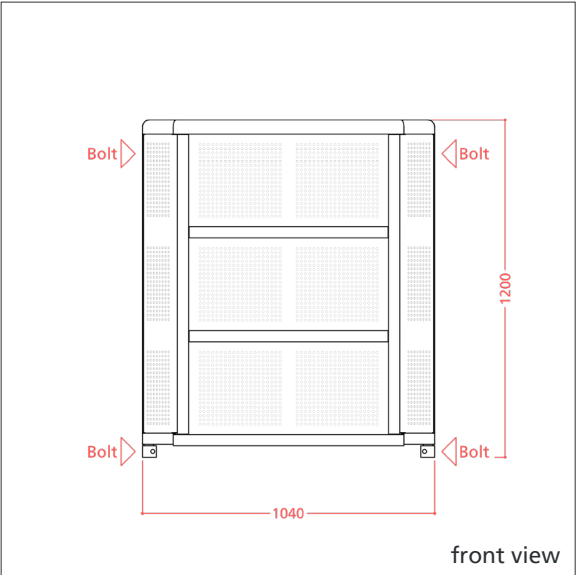
DB Half Bumper - Closed



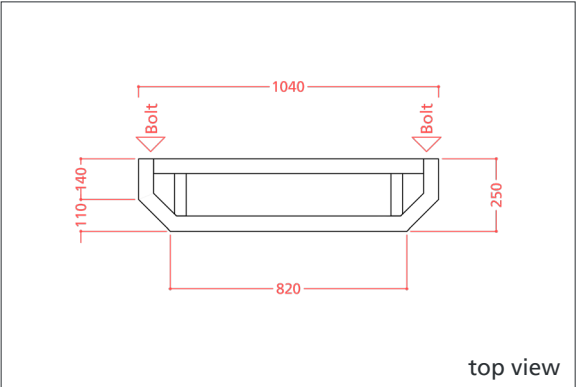
top view

Below is an example of a safe chute setup designed for high-density event entrances. The DB Half Bumper - Closed sections separate and guide large crowds into controlled lanes, leading them smoothly towards the line-up gate sections. This configuration allows security personnel to work effectively without excessive pressure from the crowd.

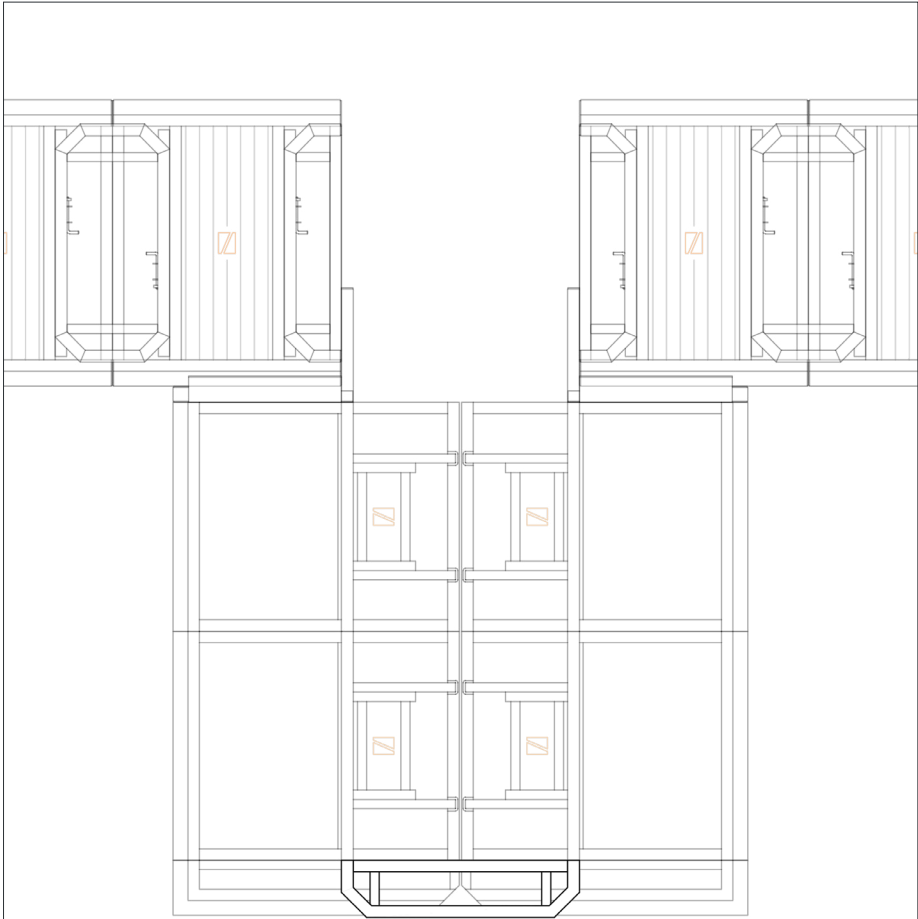
- a state of the art aluminium barrier system, built for fast setup and optimised crowd control solutions -



front view



top view



example chute setup

- a safe show for every row -