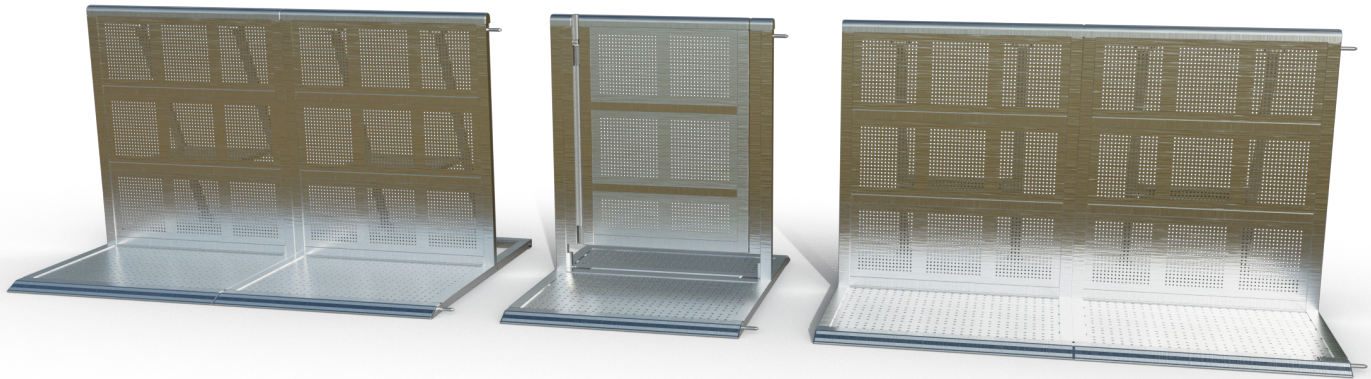


DB Gate 0m75

Dutch Barrier's Gate 0m75 is designed as a simple personnel door within a barrier line, providing controlled access to areas like FOH setups. Its inward-only opening mechanism ensures smooth entry, while its Dutch Barrier Bolt 'lock' creates a robust connection that matches the strength of a straight barrier section. Its fully enclosed floorplate and sloped approach on both ends allow for trip-free access.

- a state of the art aluminium barrier system, built for fast setup and optimised crowd control solutions -

About

Dutch Barrier's founders and partners boast over 50 years of experience in high-end manufacturing, layout design, and crowd control solutions. We saw an opportunity to start afresh with an entirely new stage barrier design, preserving the best features and improving upon them where possible.

Why

We believe in quality, safety, and creating an unforgettable experience. The safer an audience is, the more comfortable it will feel at your event.

How

We achieve quality and safety by leveraging 50-plus years of combined original creators' experience to reinvent the to date world's best barrier system from the ground up, making it accessible to anyone who might be in the market for such a system, either to rent or to buy.

What

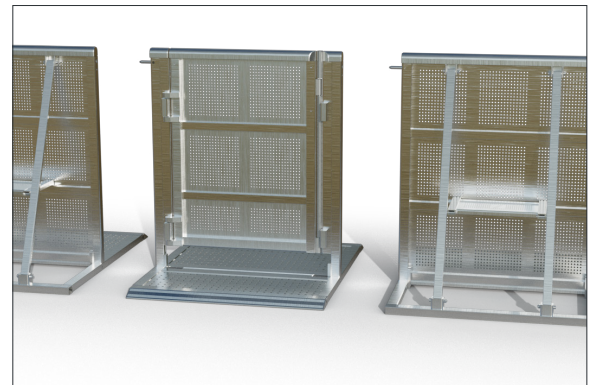
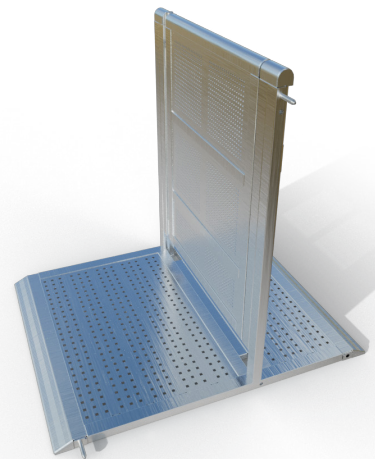
Dutch Barrier® is a state-of-the-art lightweight aluminium barrier system offering an innovative combination of straights, special sections and storage solutions. Create ingenious crowd control solutions, enjoy quick setups and enhanced handling, and benefit from an equal footprint for every dolly during transport or storage.

Oh, and there's one more thing...

Dutch Barrier® is not just a brand. It's a state-of-the-art engineering company where customer support is an integral part of the mission rather than being hidden behind the impersonality of an online promise.

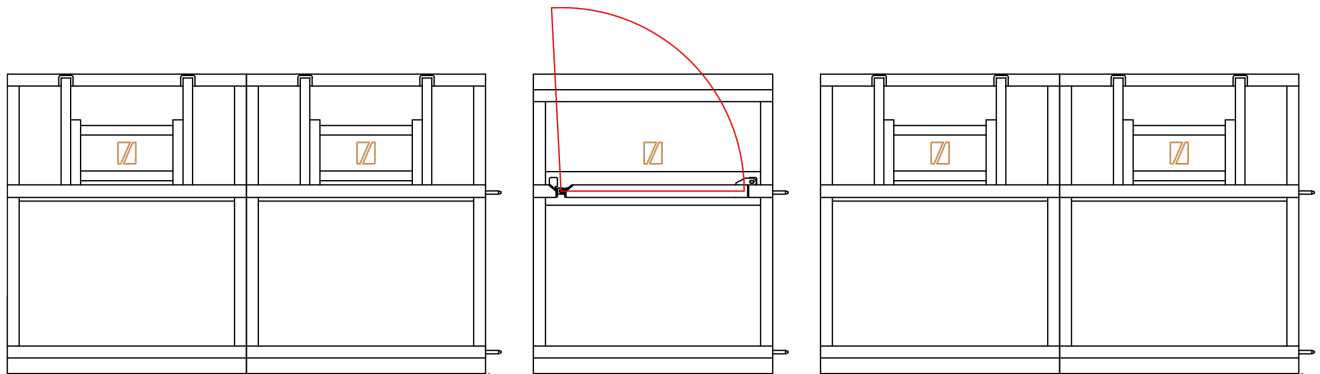
More information: info@dutchbarrier.nl

Rental & Sales: info@dutchbarrier.services



- a safe show for every row -

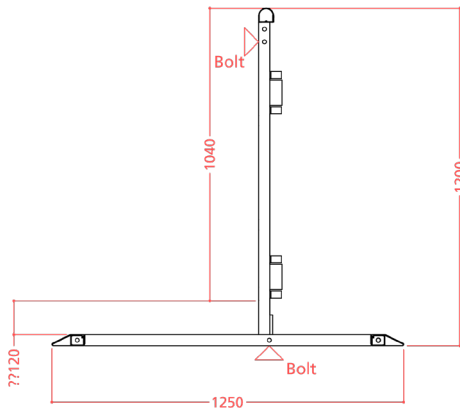
DB Gate 0m75



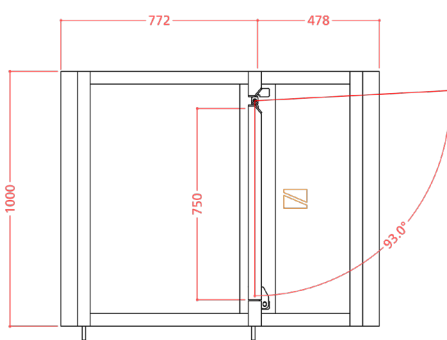
top view

Dutch Barrier's Gate 0m75 is locked tamper-proof by a DB Bolt, preventing unauthorized openings during events. The closed gate was tested to withstand a minimum of 5kN/m pressure at the top rail, following the Temporary Demountable Structures Edition 4 guidelines by the Institution of Structural Engineers (ISE). TUV reports are available upon request at Dutch Barrier & Dutch Barrier Services.

- a state of the art aluminium barrier system, built for fast setup and optimised crowd control solutions -



side view



top view

Technical Specs

- A full aluminium treadplate, sloped front and back, with a 75 cm aluminium upright integrated into a 1 m front section
- The treadplate measures 1000 mm wide and 1250 mm deep, and the upright measures 1000 mm wide and 1040 mm high (same floorplate as the 1m00 Gate)
- A rounded top rail and welded end caps for audience comfort and safety
- Bottom pin ensures easy setup and alignment
- The treadplate interconnects at the bottom on either side with one standard Dutch Barrier bolt
- Also available with black upright
- Weight: Floor 22.8kg, Upright 25,0kg
- Stored and transported per 4 complete sets in a bespoke stainless steel dolly
- Use in high crowd pressure areas: ●●●○ 3/5

- a safe show for every row -