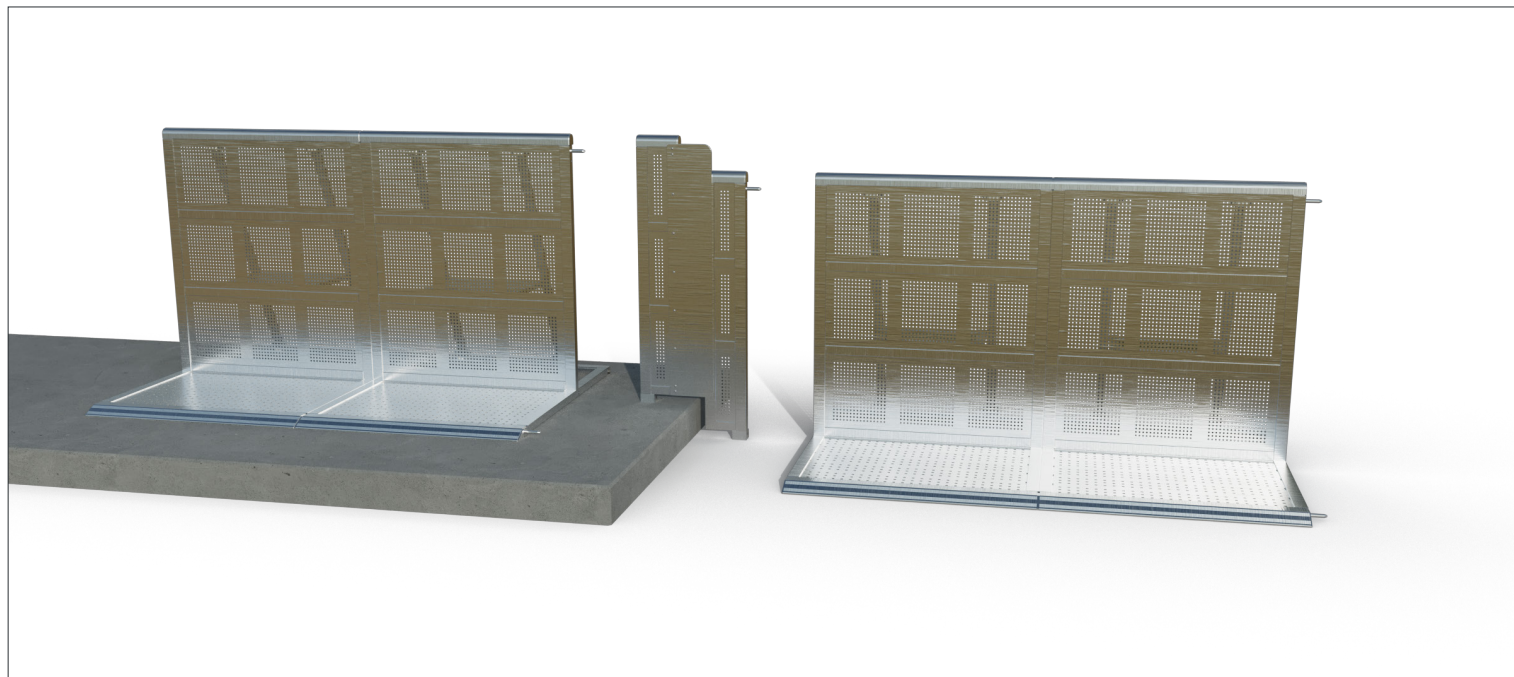


**DB Flex Curbstone Riser**

Dutch Barrier's Flex Curbstone Riser is designed to seamlessly bridge height differences in uneven terrains, such as curbstones, while maintaining a smooth barrier line. Its flexible, open-bottom design allows for significant vertical adjustments, including substantial angles in the vertical plane. This makes it perfect for event layouts with varying ground levels and complex configurations.

**- a state of the art aluminium barrier system, built for fast setup and optimised crowd control solutions -**

**About**

Dutch Barrier's founders and partners boast over 50 years of experience in high-end manufacturing, layout design, and crowd control solutions. We saw an opportunity to start afresh with an entirely new stage barrier design, preserving the best features and improving upon them where possible.

**Why**

We believe in quality, safety, and creating an unforgettable experience. The safer an audience is, the more comfortable it will feel at your event.

**How**

We achieve quality and safety by leveraging 50-plus years of combined original creators' experience to reinvent the to date world's best barrier system from the ground up, making it accessible to anyone who might be in the market for such a system, either to rent or to buy.

**What**

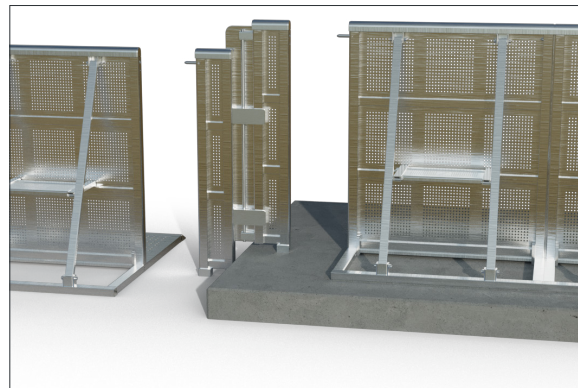
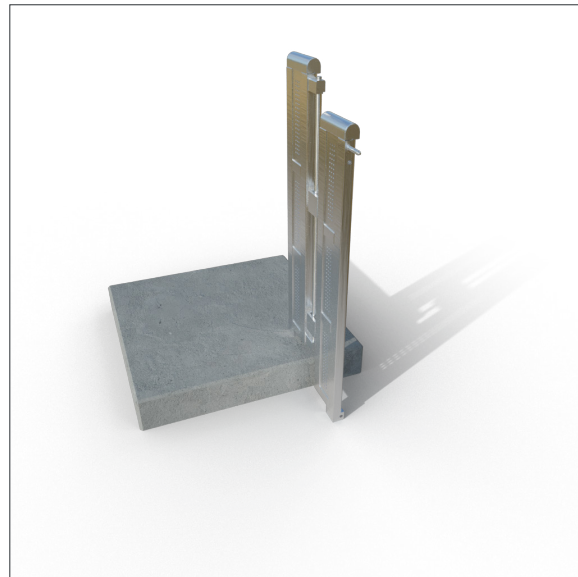
Dutch Barrier® is a state-of-the-art lightweight aluminium barrier system offering an innovative combination of straights, special sections and storage solutions. Create ingenious crowd control solutions, enjoy quick setups and enhanced handling, and benefit from an equal footprint for every dolly during transport or storage.

**Oh, and there's one more thing...**

Dutch Barrier® is not just a brand. It's a state-of-the-art engineering company where customer support is an integral part of the mission rather than being hidden behind the impersonality of an online promise.

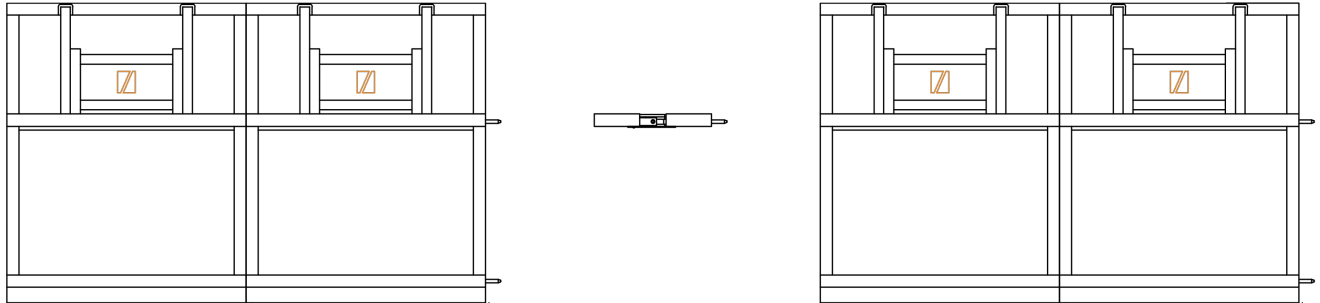
**More information:** [info@dutchbarrier.nl](mailto:info@dutchbarrier.nl)

**Rental & Sales:** [info@dutchbarrier.services](mailto:info@dutchbarrier.services)



**- a safe show for every row -**

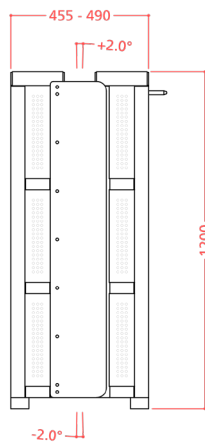
## DB Flex Curbstone Riser



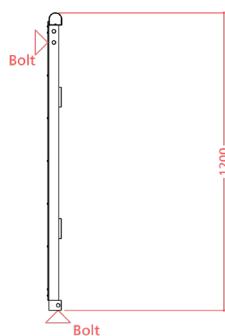
top view

While the DB Flex Curbstone Riser excels in negotiating height variations, its open-bottom design creates a break in the continuous floorplate. For this reason, it is not recommended for high-pressure crowd areas. In lower-density zones, it ensures stability and smooth transitions, especially when combined with side slopes.

- a state of the art aluminium barrier system, built for fast setup and optimised crowd control solutions -



front view



side view

## Technical Specs

- Two solid welded aluminium sections connected by a clever centre link that provides three degrees of freedom, allowing height differences and minor width variations to be negotiated
- One unit measures  $473 \pm 18$ mm wide and 1200mm high
- A rounded top rail and welded end caps for the audience's comfort & and safety
- Top pin provides for easy setup and alignment
- Solid internal and external blocks allow for added strength and easy insertion of pins and bolts
- Also available in black
- Weight 22,2kg
- Use in high crowd pressure areas: ●●●○ 3/5

- a safe show for every row -